

Gippsland Natural Connection

Newsletter of Gippsland integrated natural resources forum

Issue 06/05,
July 2005

From the Office ...

Still catching my breath after the Report Card launch, but looking forward

- An enthusiastic group met on 12 July to plan National Water Week for Gippsland (October). This group will continue to meet, including the organising of the GINRF Regional Conference - stay tuned and let me know if you would like to be involved.
- The Climate Change Impacts and Adaptations project is on its way. Expect an invitation or two to workshops , meetings etc during the next few months.
- Our Natural Resources Report Card will be showcased as part of a National project developing case studies on regional environmental reporting. Well done Gippsland National recognition !!!!
- A summary of the outcomes from the discussion about GINRF structures, roles, membership etc is included on page 2 of this newsletter. More detailed information can be obtained from me.

Executive meetings continue, about every 6 weeks. Contact your Executive rep or me if you would like something raised, showcased or discussed.

Carol Jeffs

Executive Officer

DATES

DATES

DATES...

Events Calendar

26th July 2005 - GFS Information session - see page 3

29th July 2005 - Community Water Grants info sessions - see page 2

5th August 2005 - Native Vegetation Forum - see page 5

18th August 2005 - Community and Catchments Conference - see page 3

16th September 2005 - Climate Change Impacts & Adaptation workshop

10-12 October 2005 - Asia Pacific Sustainability Roundtable

GINRF Dates

2nd August 2005 - Executive Meeting

September 5th 2005 - Executive Meeting

October 14th 2005 - Executive Meeting

PAGE 2

GINRF Reference Group
& Executive

PAGE 3

Wellington Planting
Festival

PAGE 4

Community Water
Grants

Help out the Platypus

PAGE 5

Community &
Catchments Conference
GFS Information Session

PAGE 6

Celebrating Community
Engagement

PAGE 7

Native Vegetation
Forum

PAGE 8

Coast Action/CoastCare
Community Support
Grants

PAGE 9

Local Grants Scheme
Victoria's Environmental
Sustainability Framework

PAGE 10

Asset Watch

PAGE 11

Asset Watch cont



Gippsland integrated
natural resources
forum

Gippsland Natural Connection

Issue 06/05, July 2005

GINRF Reference Group and Executive

An update

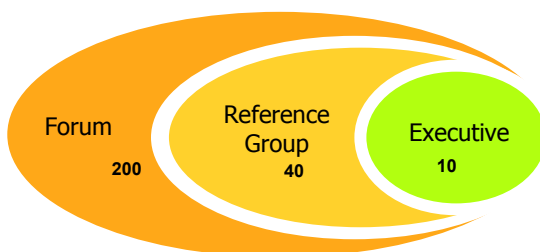
There have been some changes

The structure of GINRF as an organisation included 3 levels: Forum, Reference Group and Executive.

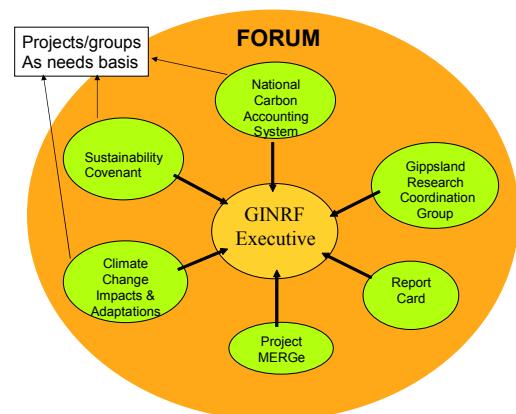
There was some concern that the middle level (Reference Group) was losing its effectiveness and should be reviewed. A consultation and discussion process resulted in the following changes.

1. Reference Group will no longer meet quarterly as a fixed group. Quarterly meetings will be held with participants targeted from the broader Forum according to the meeting topic. Working groups may meet outside these meetings and report to the Executive.
2. GINRF Executive – the membership has been discussed and is likely to need further review. As an interim step, the existing members will remain and one representative from each of the municipal councils will be added (instead of one rep from GLGN), along with the regional manager of EPA.

Before



After



Gippsland Natural Connection

Issue 06/05, July 2005

GINRF Executive

Independent Chair - Professor Barry Hart

Executive Officer - Carol Jeffs

West Gippsland CMA CEO Geoff Hocking

East Gippsland CMA CEO Graeme Dear

Gippsland Coastal Board Chair Duncan Malcolm

Department of Sustainability and Environment Regional Director Tony Edgar

Department of Primary Industries Community Relationship Manager Angus Hume

Water Industry CEO – Gippsland Water John Mitchell

Gippsland Research Co-ordination Group Sam Adeloju (Monash Uni – Gippsland)

Indigenous Cultural Heritage To be filled Was Mick Harding (GCHU)

Environment Protection Authority Regional Manager David McKenzie

East Gippsland Shire Council, Wellington Shire Council, Latrobe City, South Gippsland Shire Council, Bass

Coast Shire Council, Baw Baw Shire Council CEO, Senior Exec or Councillor To be filled

Contact Carol Jeffs for the full discussion
and outcomes paper.

51757800

Carol.Jeffs@ginrf.org.au

Wellington Planting Festival

When: Sunday 31st July 2005

10:00 am – 3:00 pm

Where: 3850 Princes Hwy, Rosedale

(5km from Latrobe River Bridge towards Sale on south side of Highway)

Your help is needed to plant over 6000 trees!

If available please bring gloves, mattocks and hammers!

BBQ Lunch provided!

For catering purposes please RSVP your attendance by contacting reception on 5147 0800.

Fencing and revegetation of the eroded gullies, which feed into the Latrobe River, will provide many environmental benefits

For further information, please contact the Maffra and Districts Landcare Network Facilitator, Wendy Hayne, on (03) 5147 0852 or 0400 141 929.

Wellington Planting Festival is proudly sponsored by:



Gippsland Natural Connection

Issue 06/05, July 2005

Community Water Grants

Have you got a water conservation project on your mind?

Australian Government Community Water Grants

Organisations Information Session

The Australian Government's Community Water Grants program allows eligible organisations to apply for grants of up to \$50,000 for on-ground works that:

- increase water saving and efficiency
- recycle and reuse water
- improve river or groundwater health

Applications are now open (closing 4 October 2005)

An information session will be held in the region at:

West Gippsland Catchment Management Authority Office

16 Hotham Street Traralgon

Date: 29th July 2005

Time: 12.30 – 2.30 pm

(Light lunch provided)

This information session will cover an overview of the Community Water Grants program, the application process, project eligibility, funding criteria, sources of technical information, questions & answers

To obtain a copy of the Grant guidelines and application form, see www.communitywatergrants.gov.au or phone 1800 780 730.

Community Information Session

This session will run the same as the earlier session, however it is aimed at the general community.



Help Out the Platypus

Please visit <http://www.amp.com.au> and click on the Platypus to support Landcare's Project Platypus.

For every click that you make, AMP Foundation will donate \$1 to this project (up to \$10,000).

Landcare's Project Platypus is a habitat restoration project aimed at improving the environment in which platypuses live. By planting native trees and shrubs on the surrounding land, water quality will improve, creating a better habitat for the platypuses.



Gippsland Natural Connection

Issue 06/05, July 2005

The Institute for Land **Community and Catchments' Conference**

Water and Society at Charles Sturt University is hosting a free, one-day conference on **'Community and Catchments'** on Thursday, 18 August at the Wagga Wagga campus. The conference will explore the ways social research can contribute to catchment management and provide case studies of where this is happening.

You are invited to attend and hear about some of the important issues our rural communities and the catchments we live in are facing, including sustainability, approaches to regional governance, landholder-agency partnerships, water reform, capacity building and cultural heritage. Speakers will include Professor Margaret Alston, Professor Kath Bowmer, Professor Allan Curtis, Professor Ted Wolfe and Associate-Professor Ian Gray.

The full program with a list of speakers and their topics, accommodation information and maps is available at the conference website. For more information or to register your attendance online, go to the conference website: http://www.csu.edu.au/research/csr/ccconf_flyer.htm

The event is being run prior to the 5th NSW Landcare/Catchment Management Forum in Wagga Wagga, NSW and will appeal to regional land managers, conservation planners, community members, landholders and others interested in community conservation and natural resource management.

GFS Information Session

The West Gippsland Groundwater Flow Systems Study, carried out by SKM has now been completed.

The West Gippsland Salinity Management Plan provides information on the extent and significance of salinity in West Gippsland.

The GFS study is the next stage in developing an improved understanding of the causes and effects of dryland salinity in West Gippsland.

There will be an information session held at

DSE/DPI office Traralgon (71 Hotham Street) on
Tuesday the 26th of July at 1.00 PM.

You are invited to attend this session to find out about the outcomes of the study and how this document can help you and your projects in the future.

This study will help to set priorities for future investment by Government and other stakeholders involved in natural resource management in West Gippsland.

For more information contact Mick Dortmans DPI Leongatha 56629914.

RSVP by 20th of July to DPI Leongatha on 56629900, or email: mick.dortmans@dpi.vic.gov.au



Gippsland Natural Connection

Issue 06/05, July 2005

Celebrating Community Engagement

The Institute for Regional Studies (Monash University Gippsland) together with The Gippsland Area Consultative Committee & the Department of Human Services present a forum for people, communities, agencies & government to further develop partnerships & strategies for Community Engagement at Lakes Entrance, East Gippsland Tuesday 11th & Wednesday 12TH October 2005.

Gippslanders have had several years experience with the new wave of 'Community Engagement & Building' supported by community, local, State & Australian government. What have we learned? Can we use this knowledge to move forward? This will be an opportune time to learn from our experiences & create stronger partnerships & strategies through open & positive discussion.

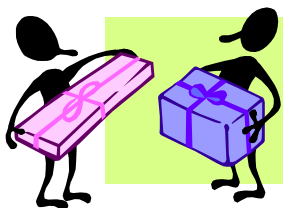
This will be a chance for everyone to participate in discussions on their experiences of engaging the diverse views & values of community whilst having a real opportunity of engaging with government. Whilst one keynote speaker will stimulate our thinking, this will not be a conference of workshops & speeches. It will be a series of directed small group round table discussions where we can learn from each other's perspectives & experiences.

The forum will run from mid morning on October 11th to mid afternoon on October 12th. Fully inclusive costs will range from \$80.00 for unpaid community workers to \$350.00 for government & large organisations (this covers the forum, meals & accommodation at the one venue).

To register your interest in receiving further information please reply to:

Community Engagement Conference
Institute for Regional Studies
Monash University Gippsland Campus
Northways Road, Churchill 3842

FAX 03.51227128



In the end, we will remember not the words of our enemies, but the silence of our friends.

Martin Luther King Jr. (1929-1968)



Gippsland Natural Connection

Issue 06/05, July 2005

Native Vegetation Forum 2005

The West Gippsland Catchment Management Authority Native Vegetation Forum will be on **Friday the 5th of August 2005, from 9:45am till 5:30 pm at the Latrobe Convention Centre, 5601 Princes Hwy Traralgon.**

The aim of the forum is to build closer working relationships between local governments, regional authorities and key natural resource management organisations. The focus of the forum will be on the State Native Vegetation Framework, including updates on the Framework and its legal implications, and on the West Gippsland CMA Regional Native Vegetation Plan.

Speakers will include key representatives from the CMA, the Municipal Association of Victoria, the Department of Sustainability and Environment, and a legal body. There will be workshops on carbon investment opportunities, roadside vegetation management, indigenous issues, mapping and monitoring biodiversity gains, and habitat hectare assessment. In addition, local government initiatives on native vegetation management will be highlighted at the forum and in a series of field days before and after the forum.

Electronic versions of the registration form are available from the WGCMA website at www.wgcma.vic.gov.au under 'events'. A program for the day is also on the website. **Please contact Lainie Berry, Project Officer Greening Australia, (03) 5662 5201 if you have any questions.**



“Not everything that can be counted counts, and not everything that counts can be counted”

Albert Einstein



Gippsland Natural Connection

Issue 06/05, July 2005

Coast Action/CoastCare Community Support

Over \$40,000 worth of grants has recently been distributed to community groups in east

Grants

Gippsland through the 2005 Coast Action/Coastcare community grants program.

Coast Action/Coastcare has been assisting coastal communities to enhance and protect the coastal and marine environment for over 10 years in Victoria.

Through funding from the Natural Heritage Trust, Coast Action is able to offer small grants to support on ground works, community education and training, awareness raising, group promotion and assistance for new groups.

Coast Action/Coastcare Facilitator for east Gippsland, Glen Forster said that this is very exciting news for so many groups in this part of the region.

"It's great to see this assistance being provided, particularly to our smaller community groups so they can continue the terrific works they do to improve and care for our coastal environments," Mr Forster said.

This year a total of 13 projects were funded in east Gippsland including:

- \$1,500 to Mallacoota Coast Action to remove Sea Spurge from around Mallacoota
- \$6,000 to Lake Tyers Coast Action to produce information boards for Red Bluff
- \$3,000 to Tambo Bluff Landcare to revegetate Dolphin Lagoon
- \$2,000 to Fishcare east Gippsland to support their 10 year celebrations
- \$2,600 to Bemm River Progress Association to replace the wall at Luderick Park
- \$2,000 to Romawi Landcare to produce an information board for Wattle Point
- \$1,000 to sponsor the ACE catchment trailer on its visit to Orbost
- \$1,300 to assist the new Friends of the Gippsland Lakes, Parks and Reserves
- \$3,800 to the Little Tern Task Force to produce information signs for Marlo and Ocean Grange
- \$5,000 to Parks Victoria to protect foreshore vegetation on Raymond Island.
- \$8,500 to Raymond Island Landcare to complete the foreshore boardwalk.

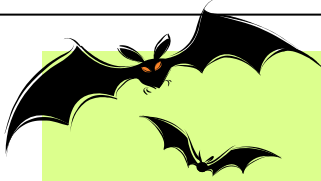
Coast Action/Coastcare would like to congratulate all the successful applicants and encourages any coastal community that has a project they would like to discuss to contact Coast Action/Coastcare Facilitator Glen Forster on 5152 0439.

Coast Action/Coastcare are also particularly interested in hearing from schools in the east Gippsland region that would like to undertake an environmental project in the coming financial year.



Gippsland Natural Connection

Issue 06/05, July 2005



“Why do we fall, sir? So that may we learn how to pick ourselves back up.”

Alfred Pennyworth (Batman Begins)

Local Grants Scheme

The Australian Government recently launched its “Working Together to Manage Emergencies” initiative,

committing \$33 million to a Local Grants Scheme (LGS) and \$16 million to a National Emergency Volunteer Support Fund (NEVSF) over four years.

The Attorney-General Philip Ruddock said that the Government is keen to marshal the commitment and enthusiasm of local communities in order to build Australia’s preparedness for emergencies and disasters of all types by providing practical support and recognition. This initiative recognises the need to develop self-reliance at both community and local government levels. Details of the program can be obtained from: <http://www.ema.gov.au/communitydevelopment>

Victoria's Environmental Sustainability Framework

“Our Environment, Our Future”

On the 20th April 2005 the Minister for Environment, the Hon John Thwaites MP, launched Victoria's Environmental Sustainability Framework, which will be a key driver of the Government's commitment to make Victoria a world leader in environmental sustainability.

The Framework provides direction for government, business and the community on building environmental considerations into the way we work and live.

For a copy of the framework visit:

<http://www.dpi.vic.gov.au/DSE/nrence.nsf/LinkView/C50F9AEFF496CEA8CA256FE800232FE1E2176756455B21FFCA256E57007C82CF>

DSE is seeking comments and feedback regarding how this framework should be implemented. Submissions on the implementation of this framework will be accepted until 10th August, 2005 and should be forwarded to the following address:

Environmental Sustainable Framework
Department of Sustainability & Environment
PO Box 500
East Melbourne VIC 3002

Or email to: sustainablestate@dse.vic.gov.au



Gippsland Natural Connection

Issue 06/05, July 2005

Asset Watch: The Gippsland Lakes

...by Adam Miller

Condition: C+
Stewardship: ***

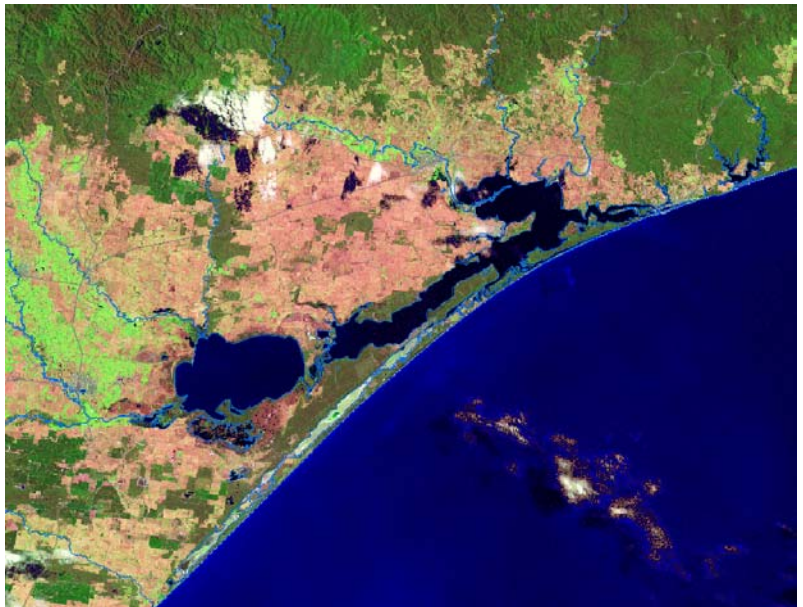
For the past 12 months we have presented to you general information about Gippsland's Natural Resources. Having covered all the assets in this way, we will now re visit them all, but this time focusing more on the stewardship aspects of Gippsland's Assets.

Due to the findings of the CSIRO audit of the Gippsland Lakes the Victorian Government funded the Gippsland Lakes Rescue Package (\$12.8 million) as well as the Gippsland Lakes Future Directions & Action Plan.

The geographic area of the Gippsland Lakes is shared between both the East and West Gippsland CMA's, with the Regional Catchment Strategies of both CMA's acknowledging that integrated catchment management is needed to care for and protect the Gippsland Lakes.

At present, there are a large number of different projects being conducted in and around the Gippsland Lakes which include:

- **Implementation of MID NRP** - this project will contribute to reducing nutrient loss from the MID into the Gippsland Lakes - Total Funding: \$1,616,000
- **Gippsland Lakes & Catchment modeling project** - this project will develop a conceptual 'whole of system' model representing the Gippsland Lakes and their catchments - Total Funding: \$165,000
- **Determination of the sources of sediment and associated nutrients to the Gippsland Lakes** - This project will estimate sediment & sediment-bound nutrient loads from each of the lakes catchments and other discrete sources - Total Funding: \$112,000
- **Catchment Scale Nutrient Reduction options** - This project will provide information on the potential for natural and constructed wetlands as nutrient buffers/transformers in order to protect the integrity of the Gippsland Lakes health - Total Funding: \$100,000
- **Gippsland Lakes Hydrological Assessment (2nd Entrance)** - This project will assess the ecological, economic and social impacts of a second entrance into the Gippsland Lakes to improve water quality - Total Funding: \$158,000



Gippsland Natural Connection

Issue 06/05, July 2005

- **Wetland Biodiversity and Monitoring** - This project will establish an index of wetland condition for the Wetlands adjacent to the Gippsland Lakes and undertake priority improvement works - Total Funding: \$179,000
- **Gippsland Lakes Nutrient Monitoring** - This project aims to assess the effectiveness of the catchment works in reducing nutrient concentrations in the lakes - Total Funding: \$160,000
- **Load monitoring for Gippsland Lakes** - The project aims to add to present infrastructure of flow gauging stations and water quality sampling stations so that the nutrient loads from the Gippsland Lake's rivers can be determined - Total Funding: \$180,000
- **Phosphorus fractionation in Gippsland Lakes sediments** - This project will carry out P fractionation measurements on sediment cores from the Gippsland Lakes, and subsequently model the sediment analyses to re-determine the potential rate of run-down of sediment bioavailable P pools - Total Funding: \$45,000

The total amount of funding for projects in and around the Gippsland Lakes for 2004-2005 totaled approximately \$3,980,677.

Another Gippsland Lakes initiative that was implemented in the last financial year was the completion on the State of the Gippsland Lakes report, the first report looking at the health and condition of the Lakes since the CSIRO report published in 1999. As part of the MERGe project, the report highlights the values of the Gippsland Lakes in our region as well as the condition of the estuaries, inland water quality and biodiversity.



To find out more about this report, or to obtain a copy contact either:

Carol Jeffs:

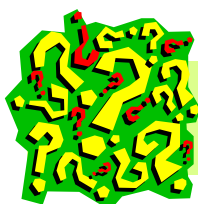
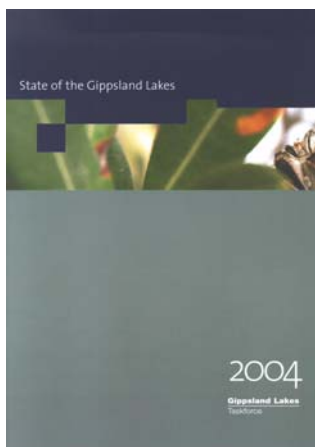
Ph: (03) 5175 7800

E: carol.jeffs@ginrf.org.au

Chris Barry

Ph: (03) 5152 0452

chris.barry@dse.vic.gov.au



“Sooner or later we must all face the choice between what is right... and what is easy.”