

PAGE 2

Coming Up...

Gippsland Greenhouse
Network

Creative Environments
Art Exhibition

PAGE 3

Eye on Water Week

PAGE 4

Eye on Water Week
cont.

Improving Biodiversity in
the Bairnsdale Foothills

\$5m for Smart Water
Ideas

PAGE 5

Government Splashes out
on Coastal Safety Projects

Landcare Awards
Recognise Volunteers

PAGE 6

Eel Hole Creek Planting
Day

Beaches to Bush Action
Plan

PAGE 7

Investment in Biodiesel

Brush-Tailed Rock
Wallabies

PAGE 8

Moving on After 10 Years
at Gippsland Water



integrated natural

From the Office ...

resources forum

As National Water Week draws closer, its great to see all the different events that are being planned in Gippsland. Page 3 and 4 have a summary of Water Week events we have heard about at the GINRF office. If yours isn't there and you want to let Gippsland know what you're up to for Water Week, [email](#) me the details and I will add it for the October edition.

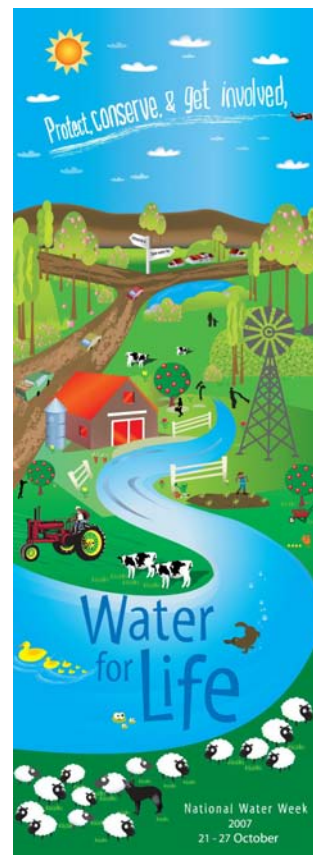
In other news, Pam Keating, chair of Gippsland Water, announced that John Mitchell will be retiring at the end of this year. John has been part of GINRF from the very beginning and I would like to (albeit prematurely) thank John on behalf of the Forum for all the effort and support that he has shown GINRF since its beginning.

Turn to page 8 for the full story.

We are almost ready to send out Edition 2 of the Customer Service Resource. If you want to get on the mailing list to receive a copy when I sent it out, send me an [email](#) and ill put you on the list.

See you next month...

Adam Miller



News From the Executive

To keep you up-to-date with the

comings-and-goings of the GINRF Executive and GINRF as a whole, each month we will feature an overview of the Executive Meeting and a link to the latest minutes. To begin with, on behalf of the forum I would like to welcome Kate Morton, Regional Manager, Gippsland for Aboriginal Affairs who recently joined the GINRF Executive team.

Other items discussed at the latest meeting include:

- A presentation on the Cultural Heritage Act - after which the Executive discussed how GINRF could add value to the relationships associated with indigenous matters
- A presentation on EPA water quality monitoring at the Gippsland Lakes
- A presentation and discussion on the Narracan Catchment Plan
- Update on actions from previous meetings

For full details of the latest GINRF Executive meeting, click the button on the right to download a copy of the minutes.

Latest GINRF
Executive
Minutes



Coming Up...

Events:

October 9 - 12 - Flood Management Conference

October 21 - 27 - National Water Week - see pages 3 and 4 for some of the activities that are being run across Gippsland for National Water Week

GINRF Dates:

October 11 - GINRF Executive



Gippsland Greenhouse Network

A Gippsland Regional Greenhouse Network has recently been formed under the Gippsland Integrated Natural Resources Forum's umbrella. The Network includes a wide range of state and local government organisations and other interest groups.

The Network will provide an opportunity for all levels of government, community, industry and academia to come together to share experiences and knowledge, and to work in partnership to develop and implement greenhouse projects.

A coordination committee, to be chaired by Keith Hamilton, has been formed from the existing network's membership. The committee will drive the development and operations of the network.

Contact David Willington on david.willington@dse.vic.gov.au for more information.

Creative Environments Art Exhibition

The Creative Environments Art Exhibition was officially opened at the Latrobe Regional Gallery last month by WGCMA Chair Liz Clay.

The project has provided the opportunity for emerging local artists to gain experience by working in a mentor situation to develop skills, ideas and exhibition experience.

The artists responded to aspects of Gippsland's environment such as Wilsons Promontory, Tarra-Bulga National Park and the brown coal industry. Some have focused on how events such as the fire season had touched their lives.

There were other exhibits opening on the same night and the combined event attracted 180 people, which was the largest the opening night the gallery has ever had.

The exhibition recently closed at the Latrobe Regional Gallery and is

now open at the Court House Gallery in Yarram.. The

exhibition will then be heading to Maffra later in the year and is likely to show in Bairnsdale early 2008.






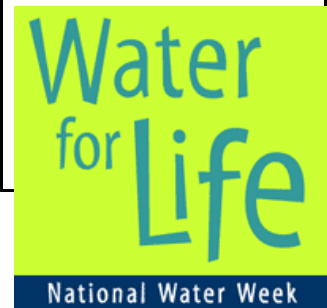
Upcoming & Recent Events



Eye On Water Week



National Water Week provides a chance for agencies and members of the community across Gippsland to come together and celebrate. Here are just some of the fantastic events that are happening across Gippsland for National Water Week 2007.

Activity	Contact
Southern Rural Water	
 <p>Primary School tours of the Macalister Irrigation District - This tour will take Primary Schools children to the Glenmaggie Dam, Irrigation channels on the Main Southern Loop, the Heyfield Wetlands and Wynns Outlet to look at channel automation. Tours will run all throughout Water Week.</p>	<p>Contact SRW for more information - juliel@srw.com.au</p>
East Gippsland Waterwatch	
 <p>East Gippsland Waterwatch is holding school visits during Water Week with over 25 schools getting involved in the 'Battle of the Bugs.' Students are building their own bugs that will for part of the Waterwatch Catchment Scene and Food web. Other bug activities will also be run during the school visits. In addition, every bug will go in the draw to win a Macro invertebrate & Water Quality Testing Kit for the winning students' school</p>	<p>For more information contact Nicole Harris - nharris@egcma.com.au</p>
South Gippsland Water	
 <p>South Gippsland Water is involved with and running a variety of events across Water Week including:</p> <ul style="list-style-type: none"> • The Water Warriors program - a leadership program for grades 5, 6 and year 7 with the topic "Our Community - Our Water." Students have been to a 2 day 'conference' where they completed tours of the WTP & WWTP and saw presentations from the Rural and Industry Sectors, the CMA & South Gippsland Water. Students will now complete a presentation which will be shown at a community evening in October. • The Water For Life poster Competition • Footprints on the Foreshore - Inverloch 	<p>Contact SGW for more information - (03) 5682 0444</p>



Is your event missing? Email the details to adamm@wgcm.vic.gov.au for your event to be included next month.

More events on the next page...

Activity	Contact
 <p style="text-align: center;">West Gippsland Waterwatch</p>	
<p>West Gippsland Waterwatch is working collaboratively with many agencies across the region.</p> <ul style="list-style-type: none"> • Friday 26 October - Macroinvertebrate activity for schools with Gippsland Water • Everyday - As part of the Primary Schools bus tour run by SRW, West Gippsland Waterwatch will be running macroinvertebrate activities at the Heyfield Wetlands • Working with SGW on the Footprints on the Foreshore day 	<p>Contact West Gippsland Waterwatch for more information - (03) 5175 7800</p>
<p style="text-align: center;">Gippsland Water</p>	
 <p>Gippsland Water is hosting 2 events during water week which include:</p> <ul style="list-style-type: none"> • Schools open day at the Traralgon Water Treatment Plant on Friday 26 October • Community open day at the Traralgon Water Treatment Plant on Saturday 27 October. The community open day will incorporate a presentation to commemorate a recent upgrade at the plant. 	<p>For more information contact Gippsland Water - 1800 066 401</p>

Improving Biodiversity in the Bairnsdale Foothills

The

Bairnsdale Foothills Biodiversity Landscape Plan, which documents values and threats, and the collaborative conservation actions needed to be undertaken by government, community groups and individuals within the Bairnsdale Foothills has now been released.

The Plan was launched by Leo Hamilton, Deputy Chair of the East Gippsland Catchment Management Authority on September 17 at Wy Yung. "This plan defines the conservation and biodiversity values of the Bairnsdale Foothills very clearly and identifies key issues within the Landscape Zone" Mr Hamilton said.

The plan can be viewed at: www.dpi.vic.gov.au/dpi/vro/vrosite.nsf/pages/bap_landscape_bairnsdale_foothills

\$5m for Smart Water Ideas

The Victorian Government is providing \$5

million to encourage smarter ways to save water through the Smart Water Fund. This provides seed funding for water conservation, water recycling, research and development projects and bio-solids management projects.

Individuals, community groups, businesses and research organisations are encouraged to apply for funding for water saving initiatives.

Applications close on 9 November 2007. For further information or to request an application pack, freecall 1800 882 432, visit www.smartwater.com.au or email

info@smartwater.com.au



Government Splashes out on Coastal Safety Projects

The Brumby Government will invest \$1 million to improve safety along Victoria's coastline, Environment Minister Gavin Jennings announced late last month.

"The Coastal Risk Mitigation Program funds projects such as the erection of safety signage, tree audits and infrastructure improvement, as well as strategic projects to ensure the safety of areas subject to erosion."

Mr Jennings said 17 projects had received grants including:

- \$65,000 for swimming awareness signing at Gippsland ports;
- \$20,000 for Debris Removal at Lang Lang (DSE)
- \$7,000 for Aquatic safety signs installation at Sandy Point
- \$30,000 for Bollard Replacement at Lions Park, San Remo
- \$145,000 for Stage 4 Wall Replacement at Port Franklin



Sandy Point

Landcare Awards Recognise Volunteers

Environment Minister Gavin Jennings late last month joined the Governor of Victoria, Professor David de Kretser, A.C., to recognise the extraordinary efforts of Victoria's Landcare volunteers.

Mr Jennings said the 2007 Victorian Landcare Awards acknowledged the outstanding achievements of 107 landcarers nominated in 13 categories covering a range of environmental work in Victoria.

"From humble beginnings in Victoria more than two decades ago, Landcare has grown into an international, community-based movement with thousands of groups carrying out valuable environmental repair projects around the world," Mr Jennings said.

The winners of the National Award categories at the 2007 Victorian Landcare Awards will become the State's representatives in the National Landcare Awards, announced in Canberra in August 2008.

Winners of the 2007 Victorian Landcare Awards from Gippsland include:

Category	Winner
Alcan Landcare Indigenous Award	East Gippsland Aboriginal Cooperative
Australian Government Landcare NRM Region Award	West Gippsland CMA
Dr Sidney Plowman Travel and Study Award	Dr Julianne Sargent
Sustainable Farming Award - East Gippsland	Rick and Jenny Robertson
Sustainable Farming Award - West Gippsland	Sustainable Farming Award - West Gippsland

Eel Hole Creek Tree Planting Day

Latrobe City Council held a community tree planting day and family fun day in Churchill on the weekend (Saturday 22 September). The aim of the day was to plant 3000 native trees, grasses and shrubs along Eel Hole Creek to improve biodiversity, stabilise the edge of the creek and help offset vehicle emissions.

Environment planner, Michelle Hutchins, said that undertaking plantings along the eastern edge of the creek will help protect and enhance the remnant vegetation and stabilise the creek bank. "The Gippsland plains grassy woodland and swamp scrub vegetation communities that are found along this section of Eel Hole Creek are now classified as endangered. It has also been confirmed that some of the remnant trees found along the creek are Strzelecki Gums (*Eucalyptus strzeleckii*) which are a nationally threatened species," Michelle explained.

Latrobe City Mayor, Cr Tony Zimora, said everyone in the local community was invited to attend with participants having the chance to help the Strzelecki Gum population by planting seedlings along the creek edge. "As well as improving the biodiversity of the area, the planting day will have the added benefit of offsetting carbon emissions," Cr Zimora said.



Alison Taylor & Phil Taylor review planting plans for Eel Hole Creek

Beaches to Bush Action Plan

The Beaches to Bush Community Opportunity Workshop Action Plan was officially launched by Lily D'Ambrosio MLA, Parliamentary Secretary, Community Development on Wednesday, 29 August at the Orbost Exhibition Centre.

A community strengthening project funded by the Department of Victorian Communities and managed by East Gippsland Shire, the 'Beaches to Bush' Project involves eleven regional communities.

The action plan documents the first twelve months of the project that involved conducting five workshops for the communities of Bemm River, Buchan, Marlo, Cape Conran, Orbost, Newmerella, Cabbage Tree Creek, Cann River, Club Terrace, Combiobar and Noorimbee.

It also sets out the results of each workshop and presents the overall vision, project ideas and priority projects that were identified.

Project facilitator Jacqui Sargeant said the workshop participants developed a collective vision for their community.

"This vision formed the basis for discussing project ideas and the development of a priority list for the community to implement the projects," she said.

Ms Sargeant said that all members of the community were welcome to attend the launch function.

Further information – Jacqui Sargeant, 5153 9500

Investment in Biodiesel

Baw Baw Shire Council has recently entered into an agreement to reduce its greenhouse gas emissions by running its diesel plant and fleet on biodiesel.

According to the Biodiesel Association of Australia, biodiesel is an environmentally friendly, high quality alternative to traditional petroleum diesel fuel and is as biodegradable as sugar, 10 times less toxic than table salt and is suitable for most diesel engines without modification.

Council CEO, Glenn Patterson, said biodiesel can and is being made in Australia from canola or any other oil or fat, via chemical reaction with an alcohol.

“There are two products available in the market. B20 is 20% bio-diesel blended with 80% diesel. B100 is 100% bio-diesel. Pure bio-diesel is 100% carbon neutral,” said Mr Patterson.

“Council intends to commission a biodiesel tank at the council depot, initially we will be trialling B20, which we expect will be successful and we will then be moving onto B100.

“Biodiesel has been used extensively in Europe and USA for over 15 years and has proven itself to be a quality product,” said Mr Patterson.

Currently council is using about 12,000 litres of diesel per month for its 30 items in the depot and vehicle fleet. This equates to the production of 390 tonnes of greenhouse gas emissions per year or 8% of total greenhouse emissions from council operations.

Council will be investing \$45,000 into the project and has applied for a planning permit for the installation and use of biodiesel at the council depot.

[Full Story available by clicking here](#)

Brush-Tailed Rock Wallabies

National Threatened Species Day on September 7 provided a timely opportunity to check on the progress of those elusive Brush-tailed Rock-wallabies in far East Gippsland.

The colony in the Snowy River National Park seems to be thriving: three years ago the Brush-tailed Rock-wallaby Recovery Team reported only five known individuals here.

Now, with continuous predator baiting, monitoring and checking, the team can report that the colony is growing, with 12 known and tagged animals and at least three more as yet untagged.

DSE team member, Lucy Clausen said that monitoring Brush-tailed Rock-wallabies through trapping is conducted biannually at three sites in the National Park in autumn and spring.



“Surveillance cameras are temporarily installed in between times to try and broaden our knowledge base and assist with determining suitable trapping times to minimise risk to young,” Ms Clausen said.



The Brush-tailed Rock-wallaby recovery work is also proudly supported by a number of corporate sponsors including The Myer Foundation, Genetic Technologies and the Potter Foundation.

Moving on After 10 Years at Gippsland Water

Gippsland Water's Acting Chair, Pam Keating, earlier this month announced the resignation at the end of the year of its long serving Managing Director, John Mitchell.

After 10 years as the organisation's CEO and more recently its Managing Director, Mr Mitchell is leaving to take up opportunities in the private sector.

Prior to his appointment to Gippsland Water in 1997, Mr Mitchell had a long and distinguished career in local government in the region as CEO of Traralgon City, CEO of Baw Baw Shire during the local government restructuring, and then as CEO of Latrobe Shire Council.

Ms Keating listed Mr Mitchell's achievements in pursuing environmental best practice which include:

- Establishment of the Gippsland Integrated Natural Resources Forum, a new and more effective model for collaborative local decision making on natural resources and environmental issues
- Development of the Australian Sustainable Industry Research Centre, a collaboration with Monash University and the Cooperative Research Centre on Waste Management, developing new technologies to help industry achieve sustainable operations
- Appointment of a Technical Review Panel of eminent and highly qualified people to help Gippsland Water plan strategically and achieve outstanding results in natural resource and risk management
- Development of the Soil and Organic Recycling Facility, with good community endorsement, a vital facility to support Gippsland's progress
- Initiation of the Gippsland Water Factory, widely recognised as a highly innovative solution to a range of environmental and water supply challenges.



"It had been an absolute privilege to lead such a wonderful group of dedicated staff at Gippsland Water, and in this regard I include both former and present employees. I have also enjoyed immensely working with local community and interest groups," Mr Mitchell said.

Ms Keating said that John's 10 year anniversary on 1 September would be a cause for celebration.

She said that the Gippsland Water Board would proceed with the task of finding a replacement before John Mitchell left the company on December 31 2007.

